



**SUSTAINABLE
FORESTRY
INITIATIVE**
WESTERN CANADA

SFI-01150

**SFI CERTIFIED ORGANIZATIONS &
WOOD PRODUCERS**

WOOD PRODUCER INFORMATION PACKAGE

**WESTERN CANADA SFI
IMPLEMENTATION COMMITTEE (WCSIC)**

April 2023

DOWNIE
TIMBER LTD.

CANOE brand[®]
Canoe Forest Products

GORMAN
The Finest Boards[®]

1. Introduction

The Western Canada Sustainable Forestry Initiative® Implementation Committee (WCSIC) is comprised of members of Sustainable Forestry Initiative (SFI®) Certified Organizations in British Columbia, Alberta and Saskatchewan, structured under two regional committees, BC and Prairie.

SFI Certified Organizations are certified by an accredited certification body to be in conformance with the SFI Forest Management Standard, Small-Scale Forest Management Module for Indigenous Peoples, Families and Communities, Fiber Sourcing Standard, Certified Sourcing Standard and/or the Chain of Custody Standard. In addition, Certified Organizations believe forest landowners have an important stewardship responsibility and a commitment to society. We recognize the importance of maintaining viable public and private forest forestlands. SFI Certified Organizations support sustainable forestry practices on forestland they manage and promote it on other lands where they source fiber. They endorse efforts to protect private property rights, and to help all landowners manage their forestland sustainably. The WCSIC performs local outreach and education activities that promote sustainable forestry, the SFI program, and SFI Standard conformance on public and private forestlands.

The Wood Producer Information Package is an outreach tool for landowners or wood producer supplying wood to SFI Certified Organizations from North American forests. The Package provides guidance for managing forestlands consistent with SFI Program Principles and Objectives. SFI Certified Organizations also encourage forest landowners to participate in forest management certification. Landowners considering certifying their lands should contact the nearest SFI Program Participant or the WCSIC through our website: www.wcsic.ca.

Purpose

The purpose of this Information Package is to provide guidance to SFI Certified Organizations and Wood Producers on SFI Fibre Sourcing Standard requirements for Wood Producer Training (Objective 6, Performance Measure 6.2) and Landowner Outreach (Objective 7, Performance Measure 7.1).

2. Sustainable Forestry Initiative (SFI) Inc.

SFI Principles

SFI Certified Organizations who purchase fiber from other forest owners and/or managers support the following principles as provided in the SFI 2022 Fiber Sourcing Standard:

1. Sustainable Forestry
2. Forest Productivity and Health
3. Protection of Water Resources
4. Protection of Biological Diversity
5. Aesthetics and Recreation
6. Protection of Special Sites
7. Legal Compliance
8. Research
9. Training and Education
10. Community Involvement and Social Responsibility, and Respect for Indigenous Rights
11. Transparency
12. Continual Improvement
13. Responsible Fiber Sourcing

Many forest companies and organizations have currently achieved SFI certification, or certification to other sustainable forest management standards to help ensure the future well-being of the forest ecosystem.

To demonstrate conformance with SFI or other standards, companies hire third-party independent auditors, who verify that the companies' forest practices and environmental management meet the requirements of the certification system. To ensure transparency, these auditors' reports must be made available to the public. The audit verification is an ongoing process that ensures continuing conformance with the sustainable forest management standards. For more information on the SFI Standard please refer to the SFI website: <https://forests.org/>.



Figure 1: SFI Certification is Third Party Verified through Annual Audits

SFI Objectives

The SFI Fiber Sourcing Standard 2022 contains Objectives, Performance Measures, and Indicators to communicate and verify conformance with the overarching Principles. There are eleven Objectives that SFI Certified Organizations adhere to for their Fiber Sourcing Standard certification, supported by numerous Performance Measures and Indicators applicable to fiber sourcing from North American forests. We provide the listing of the Objectives below and encourage readers to review the more detailed Performance Measures and Indicators on the SFI website: <https://forests.org/>:

- Objective 1: Biodiversity in Fiber Sourcing
- Objective 2: Adherence to Best Management Practices
- Objective 3: Use of Qualified Resource Professionals, Qualified Logging Professionals and SFI Certified Logging Companies
- Objective 4: Legal and Regulatory Compliance
- Objective 5: Forestry Research, Science and Technology
- Objective 6: Training and Education
- Objective 7: Community Involvement and Landowner Outreach
- Objective 8: Public Land Management Responsibilities
- Objective 9: Communications and Public Reporting
- Objective 10: Management Review and Continual Improvement
- Objective 11: Avoid Controversial Sources

SFI's Work

SFI is a sustainability leader through their work in four focus areas:

- Standards (certification)
- Conservation (research, projects, grants)
- Community (SFI Implementation Committees, First Nations)
- Education (school programs, employment)

Company Audits

As part of the SFI Certified Organization's commitment to sustainable forestry management, an on-site visit by the Certified Organization or their independent auditor to the wood producers' operations may be conducted to answer any questions about the SFI program. The visit may also include an assessment of the conditions on the logging site as part of our requirements to meet the applicable SFI Standard(s).

3. Sustainable Forest Management Practices

The WCSIC supports forest land managers in conducting sustainable forest management operations. Wood producers are expected to conduct harvesting operations in compliance with all applicable provincial or federal legislation. There is legislation that applies to both Crown (public) forest land and private land that is managed for forestry. SFI Certified Organizations encourage wood producers to consider the following guidance on forest land managed by the wood producer or landowner. Landowners should contact an appropriate qualified resource professional for additional guidance particularly with respect to Best Management Practices for Water Quality.

- a. Reforestation: Prompt reforestation of lands managed for forestry will help to ensure successive crops of trees, in addition to supporting many other non-timber objectives. Reforestation plans can detail the steps needed to successfully re-establish seedlings on harvested forest lands. SFI Certified Organizations will, on request, support you in identifying Registered Forest Professionals in your area to assist you in developing a reforestation plan for your site. See below for more information on Qualified Resource Professionals and web links to seedling nurseries in Canada. A list of seedling nurseries can also be obtained from the applicable SFI Certified Organization. Note that seedlings generally need to be ordered at least one year in advance of planting dates.
- b. Afforestation: When feasible, forest landowners are encouraged to practice afforestation; converting lands back to productive forests or planting trees on lands that have not recently supported forests. Afforestation has many benefits to the environment; two examples are increased overall land productivity and increasing carbon storage. In certain jurisdictions, afforestation may qualify as carbon credits for offsetting greenhouse gas emissions.
- c. Invasive Species: The SFI Standard requires participants to limit the introduction, impact and spread of invasive species (plants and animals) that directly threaten or are likely to threaten native plant and animal communities.

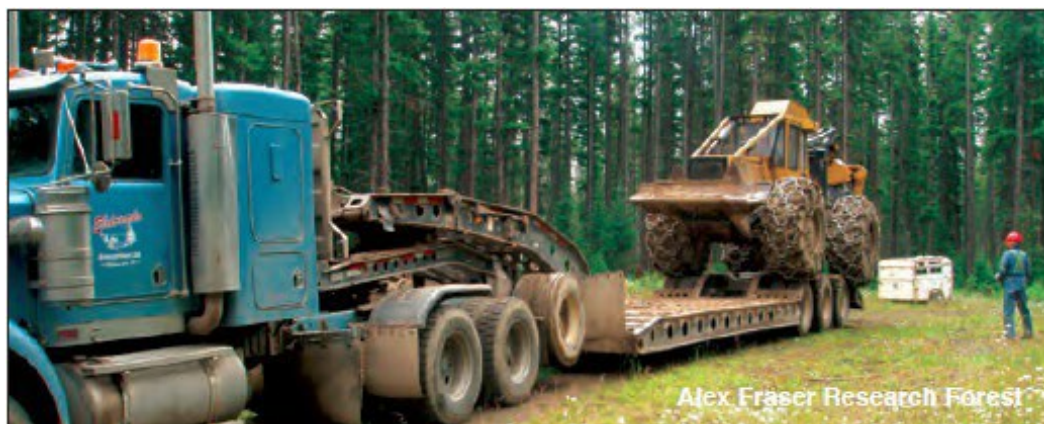


Figure 2: Check Machinery prior to Movement & Clean as Needed to Prevent Spread of Invasives

Information on the control of invasive plants can be found through:

- The Invasive Species Council of British Columbia: <https://bcinvasives.ca/>
- The Alberta Invasive Species Council: <https://abinvasives.ca/>
- The Saskatchewan Invasive Species Council: <https://www.saskinvasives.ca/>
- The Federal Government of Canada's strategies for Invasive Alien Species in Canada: <https://www.canada.ca/en/environment-climate-change/services/biodiversity/invasive-alien-species-strategy.html>. The program includes invasive plants and animals.

- d. **Water Quality and Riparian Management:** Riparian habitat (area adjacent to creeks, lakes and wetlands) is very important for protecting water quality and provides high value wildlife habitat. Special measures are often required in riparian habitat to ensure water quality and habitat is managed on a sustainable basis. SFI Certified Organizations will, on request, support you in identifying qualified resource professionals in your area to assist you in preparing prescriptions to manage riparian habitat.

Management and control of sediment during road construction, maintenance and deactivation activities is key to maintaining water quality. Adhere to local wet weather shutdown guidelines and cease activity if there are any safety or environmental concerns. Do not direct ditchwater directly into any fish streams or drinking water source areas (i.e., use ditch blocks, sumps, etc. Hay bales can also be used to assist with sediment control, but ensure they are maintained and removed once activity is complete. Where material is available, armour culvert intakes and outtakes for any areas of concern for sediment transport.

- e. **Fish and Fish Habitat:** It is prohibited under the [Federal Fisheries Act \(https://www.dfo-mpo.gc.ca/campaign-campagne/fisheries-act-loi-sur-les-peches/introduction-eng.html\)](https://www.dfo-mpo.gc.ca/campaign-campagne/fisheries-act-loi-sur-les-peches/introduction-eng.html) to undertake works that result in the death of fish, a harmful alteration, disturbance or destruction of fish habitat (HADD) or to introduce a deleterious substance (e.g. excessive sediment) into fish habitat. Works in or adjacent to fish habitat may require a project review by Fisheries and Oceans Canada (<https://www.dfo-mpo.gc.ca/index-eng.html>) and if works are determined to result in a HADD an authorization will be required before work can be undertaken. The Fisheries and Oceans Canada website provides Measures to Protect Fish and Fish Habitat (<https://www.dfo-mpo.gc.ca/pnw-ppe/measures-mesures-eng.html>), Codes of Practice (<https://www.dfo-mpo.gc.ca/pnw-ppe/practice-pratique-eng.html>) and guidance when a project review (<https://www.dfo-mpo.gc.ca/pnw-ppe/reviews-revues/request-review-demande-d-examen-001-eng.html>) is required.

- f. **Soil Conservation:** Protecting the soil resource is the key to long-term productivity of forest lands. Conducting operations in a manner that conserves the soil resource is critical to sustainable forestry. Weather conditions can be a major factor in soil disturbance. Operations should avoid conditions that create excessive rutting or compaction. Plan operations with soil disturbance in mind. Weather conditions and soil disturbance should be assessed, and consideration given to curtailing or stopping activities causing soil disturbance when soils are too wet to support equipment. For example, in the BC Interior and prairies, consider winter harvesting on wet ground to better support equipment. With different soil types, and phases of harvesting, it may be possible to carry out some operations in wet weather without causing excessive soil disturbance. Appropriate equipment should be used to minimize soil disturbance.



Figure 3: Proper equipment, such as this wide-tired skidder, and proper techniques to reduce impacts to soil

The area in permanent roads, trails and landings should be minimized to maintain productive forestland. SFI Certified Organizations will, on request, support you in identifying qualified resource professionals in your area to assist you in managing the soil resource on your forestlands.

- g. **Biodiversity & Wildlife:** Both regulation and government approved land use plans set out requirements at the stand and landscape level. These requirements vary by province and region. Landowners may seek assistance from SFI Certified Organizations or by contacting an appropriate qualified resource professional.



Figure 4: Species at Risk – Grizzly Bears

- h. **Wildlife Management:** Managing forest lands for general wildlife features or habitat characteristics as well as specific management for species at risk are important components of sustainable forestry. SFI Certified Organizations may have guides for species at risk management that could be made available upon request. In addition, SFI Certified Organizations will support you in identifying qualified resource professionals in your area to assist you in developing wildlife management strategies.

- [Government of Canada Species at Risk:
https://www.canada.ca/en/services/environment/wildlife-plants-species/species-risk.html](https://www.canada.ca/en/services/environment/wildlife-plants-species/species-risk.html)
- NatureServe Canada's Conservation Data Centres:
<https://www.natureserve.org/canada>

- i. **Forests with Exceptional Conservation Value (FECV):** Forest landowners are encouraged to evaluate their lands to determine if they have FECV. FECV are lands with critically imperiled (G1) and imperiled (G2) species and ecological communities, a conservation status determined by NatureServe that can be accessed through the link provided below. Landowners may seek assistance from SFI Certified Organizations or by contacting an appropriate qualified resource professional.

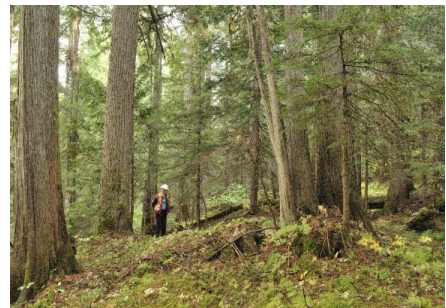


Figure 5: FECVs

The WCSIC has also completed an FECV Assessment for BC, AB and SK that can be provided. Recommended Best Practices include assessing the presence of FECVs in the proposed work location, ensuring that site specific plans address the conservation of known locations or critical habitat, and ensuring that pre-work meetings are held to review specific instructions or plans. Workers should also be instructed to stop work and seek direction if any previously unidentified wildlife features are encountered during work activities.

[NatureServe Canada's Conservation Data Centres:
https://www.natureserve.org/canada](https://www.natureserve.org/canada)



j. Special Sites: The SFI Standard requires Certified Organizations to manage lands that are ecologically, geologically, or culturally important in a manner that takes into account their unique qualities. Identification and management of special sites covers a broad range of values: ecological, geological, historical, cultural, and spiritual. Landowners may consult with local historians, archeologists, First Nations, local governments, and others to determine significance to map and manage for their unique features.

Figure 6: Special Sites


- k. Coarse woody debris/ harvest residue: The SFI Standard requires participants to manage harvest residue (e.g., slash, limbs, tops) with consideration given to economic, social and environmental factors (e.g., organic and nutrient value to future forests, smoke management and carbon emissions) and other utilization needs. In the absence of landowner harvest residue management plans, landowners should contact SFI Certified Organizations or qualified resource professionals in their area for suggested management practices for their forest lands.
- l. Landscape Aesthetics: Managing harvesting operations to minimize visual impact is an important part of sustainable forestry. Operations may impact the views of many individuals and communities. The WCSIC recommends that the visual impact of harvesting be considered within visually sensitive areas. For guidance or advice landowners are encouraged to contact a qualified resource professional knowledgeable in visual management assessment and planning.



Figure 7: Visual Quality Landscape Management

- m. Qualified Resource Professionals: The WCSIC and SFI Certified Organizations do not endorse specific professionals or companies as to their appropriateness to landowners. The following lists are intended to inform landowners seeking assistance from qualified resource professionals to further manage and or develop their lands consistent with SFI Principles. The WCSIC or SFI Certified Organizations may assist landowners in contacting qualified resource professionals.

Table 1: Qualified Resource Professional Resources

Qualified Resource Professional Category	Resources
Forestry	<p>BC, Alberta, and Saskatchewan have respective Associations of Forest Professionals where membership directories can help you identify forestry consultants to assist you in planning aspects of forest management, including reforestation plans, visual management, riparian management, soil conservation and wildlife management.</p> <ul style="list-style-type: none"> - Forest Professionals British Columbia: https://fpbc.ca - Association of Alberta Forest Management Professionals: https://aafmp.ca/ - Association of Saskatchewan Forestry Professionals: https://www.asfp.ca/
Biologists	<p>Each province within the WCSIC has a membership database for professional biologists. Members could assist you with planning for riparian management and wildlife management. An SFI Program Participant can also assist you in identifying biologist consultants in your area.</p> <ul style="list-style-type: none"> - The College of Applied Biology – British Columbia: https://www.cab-bc.org/ - Alberta Society of Professional Biologists: https://www.aspb.ab.ca/
Engineers	<p>The following websites have a member’s section that provides information on qualified professionals to assist in such areas as operations on potentially unstable or steep terrain and engineered structures such as bridges.</p> <ul style="list-style-type: none"> - The Association of Professional Engineers and Geoscientists of British Columbia: https://www.egbc.ca/ - The Association of Professional Engineers, Geologists, and Geophysicists of Alberta: https://www.apega.ca/ - The Association of Professional Engineers and Geoscientist of Saskatchewan: https://www.apegs.ca/
<p>Seedling Nurseries and Seed Procurement</p> 	<ul style="list-style-type: none"> • Forest tree seedlings can be procured for reforesting British Columbia, Alberta and Saskatchewan forest sites from a number of nurseries located in their respective province. Specialists within those nurseries, as well as SFI Certified Organizations, can be consulted for advice on obtaining appropriate seed and seedlings for your specific reforestation site. Larger nurseries often grow certain amounts of locally suitable seedlings for small “spot purchases” each year. • A list of forest tree seedling nurseries for British Columbia, Alberta and Saskatchewan can be found at: <ul style="list-style-type: none"> - Canadian Forests Directory of Silviculture Contractors and Forest Nurseries: https://www.canadian-forests.com/silviculture-nurseries.html <p>The Forest Nursery Association of BC website: https://www.fnabc.com/</p>

n. Qualified Logging Professionals

The WCSIC encourages wood producers to utilize the services of Qualified Logging Professionals (QLP’s). QLP’s will have successfully completed a training program recognized by the WCSIC. A list of local qualified logging professionals can be obtained from a SFI Certified Organization, or inquiry through the WCSIC website: <https://wcsic.ca/>.

o. Guidebooks and Sustainable Forestry Management Practices

The WCSIC supports small forest landowners' forestry operations through promotion of sustainable forestry management. Wood producers are expected to conduct harvesting operations in compliance with applicable provincial and/ or federal legislation. The intent of sustainable forestry practices for these lands is to maintain or protect, where practical, forest resource values. The WCSIC provides and/ or directs small private landowners to information about sustainable forestry practices for reforestation, riparian management, soil conservation, wildlife management and visual or scenic quality. Resources for landowners can be found with the following organizations and on their websites:

- British Columbia's Private Forest Landowners Association Best Management Practices Handbook
- British Columbia's Managed Forest Council Field Practices Guide: <https://www.mfcouncil.ca/legislation-policy/policies-and-procedures/>
- Woodlot Management Guide for Alberta: chrome-extension://efaidnbmnnnibpcajpcglclefindmkaj/viewer.html?pdfurl=https%3A%2F%2Fwww1.agric.gov.ab.ca%2F%24department%2Fdeptdocs.nsf%2Fall%2Fapa15536%2F%24file%2Fwoodlot-book%2520rd.pdf%3FOpenElement&clen=6866545
- BC Small Woodland Partnership Outreach: http://www.woodlot.bc.ca/swp/SWP/SWP_Partners.html

SFI Certified Organizations will not purchase wood from unknown sources, sources/ areas associated from controversial sources or from wood producers whose practices are illegal.

4. Other Considerations

a. Spill Response Plan

Fuel and other material spills have the potential to cause environmental damage. Wood producers are encouraged to become familiar with spill reporting requirements and to have an action plan and a supply of spill containment and mop up equipment available on site. Reportable spills must be communicated to the relevant provincial authority.

To Report a Spill:

British Columbia - Emergency Management BC – 1-800-663-3456.

Alberta Environmental Protection – 1-800-222-6514.

Saskatchewan - Spill Report Centre – 1-800-667-7525.

b. Fire Preparedness

Wood producers are encouraged to become familiar with applicable wildfire legislation in their province. Provincial legislation will dictate what type of preparedness plan and firefighting equipment must be on hand when harvesting wood. The legislation also includes provisions for monitoring fire danger ratings (due to weather conditions) and specific restrictions on activities that apply under certain conditions (e.g., fire watch, early shifts, shutdowns).

To Report a Wildfire:

British Columbia – 1-800-663-5555.

Alberta – 310-FIRE (310-3473).

Saskatchewan – Forest Fire Control Centre at 1-800-667-9660.

Wood producers should also be aware of the requirement of post-harvest wildfire hazard abatement requirements. Guidance on wildfire hazard abatement is available at the following sources:

- BC Wildfire Management Branch:
<https://www2.gov.bc.ca/gov/content/industry/forestry/managing-our-forest-resources/wildfire-management>
- BC Wildfire Management Branch: A Guide to Fuel Hazard Assessment and Abatement in British Columbia: <https://www2.gov.bc.ca/gov/content/safety/wildfire-status/prevention/for-industry-commercial-operators/hazard-assessment-abatement>
- Alberta Environment and Sustainable Resource Development: Wildfire Prevention & Enforcement:
<https://wildfire.alberta.ca/firesmart/default.aspx>
- Alberta Fire Smart Program:
<https://wildfire.alberta.ca/firesmart/default.aspx>
- Saskatchewan Environment Ministry: Wildfire Management:
<https://www.saskpublicsafety.ca/emergencies-and-response>



**Figure 8: Wildfire Prevention –
(Mobile Grapple Skidder Watertank/
Pump Unit)**

c. Health & Safety

British Columbia, Alberta and Saskatchewan have acts and regulations for, Worker Compensation and Employment Standards. The regulations set minimum standards regarding occupational health, safety and employment. These agencies offer direction on the implementation and interpretation of the regulations through periodic training sessions, self-education guides and site visits. Information and training opportunities can be found at the following websites:

- [Work Safe BC: https://www.worksafebc.com/en](https://www.worksafebc.com/en)
- [BC Forest Safety Council: https://www.bcforestsafesafe.org/](https://www.bcforestsafesafe.org/)
- [BC Employment Standards Branch: https://www2.gov.bc.ca/gov/content/employment-business/employment-standards-advice/employment-standards](https://www2.gov.bc.ca/gov/content/employment-business/employment-standards-advice/employment-standards)
- [BC Employers' Advisors Office: https://www2.gov.bc.ca/gov/content/governments/organizational-structure/ministries-organizations/ministries/labour](https://www2.gov.bc.ca/gov/content/governments/organizational-structure/ministries-organizations/ministries/labour)
- [Work Safe Alberta: https://www.wcb.ab.ca/](https://www.wcb.ab.ca/)
- [Alberta Safety Council: https://www.safetycouncil.ab.ca/](https://www.safetycouncil.ab.ca/)
- [Alberta Human Services – Employment Standards: https://www.alberta.ca/labour-and-immigration.aspx](https://www.alberta.ca/labour-and-immigration.aspx)
- [Work Safe Saskatchewan: https://www.worksafesask.ca/](https://www.worksafesask.ca/)
- [Saskatchewan Safety Council: https://www.sasksafety.org/](https://www.sasksafety.org/)
- [Saskatchewan Labour Relations & Workplace Safety: https://www.saskatchewan.ca/government/government-structure/ministries/labour-relations-and-workplace-safety](https://www.saskatchewan.ca/government/government-structure/ministries/labour-relations-and-workplace-safety)

5. Company Trained Contacts

Advice on qualified professionals can be obtained from Canoe Forest Products Ltd., Downie Timber Ltd. or Gorman Bros. Lumber Ltd. These Contractors have successfully completed training enabling them to conduct operations in a sustainable manner.

Canoe Forest Products Ltd.

CFP Contact	Office	Cell	CFP Contact	Office	Cell
Fire Cell Phone	250-833-2454		Jason Neumeyer, RPF	250-833-1241	250-463-2042
CFP's Administration Office	250-833-1200		Ray Mills, RPF	250-833-1236	250-517-7608
Luke Gubbels, RPF	250-833-1243	250-803-1095	Ty Barrett, RFT		250-515-2295
Greg Hislop, RPF	250-833-1237	250-804-3913	Kaitlin Conroy, RFT	250-833-1235	604-603-1208
			Shawn Rolston, RFT	250-833-1242	250-463-5699
			Patti Schmidt	250-833-1232	
Jeff Lipsett, RPF	250-833-1230	250-253-6726	Stewart Taylor, RPF	250-833-1243	250-833-2074
Phone	Contractor	Phone	Contractor		
Logging Contractors		Road Construction Contractors			
1-250-679-3213	Mattey Bros. Cont.				
1-250-832-3250	J.G. Moore Cont. Ltd.	1-250-835-8393			HTK Roadbuilders Ltd.
1-250-833-2822	Tor-Kel Contracting Ltd.	1-250-833-6200			Little Dipper Contracting
Silviculture Contractors		Forestry Consultants			
		250-372-0857			Atlas Information Services
604-916-6454	All-Stars Silviculture	250-517-8496			Forest Matters Forestry Consulting
		250-832-3366			Forsite Consultants Ltd.
250-833-2953	Chad Burke Contracting	250-804-0332			Landmark Forest Management Ltd.
		250-838-2020			Woodford Forestry Services Inc.
250-832-7485	J.D. Fournier Consulting	Nurseries – Tree Growing			
250-558-8734	Nature's Treasures	250-675-4838			Sorrento Nursery

Downie Timber Ltd.

<u>Downie Contact</u>	<u>Office</u>	<u>Cell</u>	<u>Downie Contact</u>	<u>Office</u>	<u>Cell</u>
Dawn Doeber, RPF	250-837-7240	250-814-4525	Heidi Marks, RPF	250-837-7207	250-439-8021
Wayne Johnson, RFT	250-837-7249	250-837-1709	Joel Springer, RPF		250-308-2995
Chip McKay, RPF		250-683-8040	Catherine Brady, TFT	250-837-7225	
<u>Phone</u>	<u>Contractor</u>		<u>Phone</u>	<u>Contractor</u>	
<u>Logging Contractors</u>			<u>Road Construction Contractors</u>		
250-679-3213	Mattey Bros. Cont.		1-250-835-8393	HTK Roadbuilders Ltd..	
250-837-2257	Canyon Creek Logging				
250-897-5917	H&C Logging				
<u>Silviculture Contractors</u>			<u>Forestry Consultants</u>		
250-814-3423	Fireweed Mountain Silviculture		250-372-0857	Atlas Information Services	
250-710-7782	Evergreen Forest Services Ltd		250-804-0332	Landmark Forest Management Ltd.	
604-916-6454	All-Stars Silviculture		<u>Nurseries – Tree Growing</u>		
250-814-7708	Nakimu Ventures		250-675-4838	Sorrento Nursery	

Gorman Bros. Lumber Ltd.

<u>Gorman Bros. Contact</u>	<u>Office</u>	<u>Cell</u>	<u>Gorman Bros. Contact</u>	<u>Office</u>	<u>Cell</u>
Kerry Rouck, RPF	250-768-6220	250-469-3054	Matt Scott, RPF	250-768-6203	778-214-1847
Brenden Tostenson, RPF	250-768-6242	250-212-9563	Celia Louie, TFT	250-768-6273	250-460-0348
Doug Campbell	250-768-6257	250-300-7799	Randy Hardy, RPF	250-768-6244	250-870-6116
Bryan Darroch, RPF	250-768-6247	250-469-0807			
<u>Phone</u>	<u>Contractor</u>		<u>Phone</u>	<u>Contractor</u>	
<u>Logging Contractors</u>			<u>Road Construction Contractors</u>		
250-470-2127	Solano Resources		250-469-3672	Ensign Bros Contracting	
250-212-0569	Mike Closs Logging Ltd. (Mike C.)		250-878-5823	Okanagan Iron Worx	
250-878-6423	Mike Closs Logging Ltd. (Dan H.)				
250-490-5183	D.B. Martin Contracting				
250-470-8634	SAR-KRIS Contracting				
			<u>Forestry Consultants</u>		
			250-862-7037	Stone Mtn. Forest Management	
			250-804-0332	Landmark Forest Management Ltd.	
			250-769-0507	Drake Forestry Services Ltd.	
			250-318-3196	Lonely Mountain Consulting	
			250-306-1981	Woodford Forestry Services Inc.	
			250 809-6505	Collen's Forestry Consulting	
<u>Silviculture Contractors</u>			<u>Nurseries – Tree Growing</u>		
250 308-6860	WG Shaw and Son (Site Prep)				
250 809-8619	Quastuco Silviculture Ltd.		250-498-4974	K&C Silviculture	